

## Only Outland™ Side Tube Steps can offer you both 3" and 4" round Tube Steps for your truck

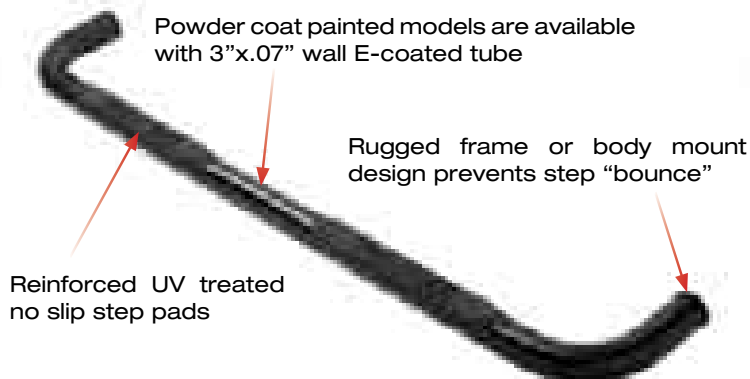
Whether you own a "beef up" lifted truck or a stock design, Outland Automotive makes a tube step for you! Our complete line of high quality 3" Tube Steps are the perfect solution for any truck or SUV looking for a sturdy step and great looks. Our 4" steps offer Crew Cab owners a little "extra beef" when they want that heavy duty and extra step space! All Outland Tube Step designs feature the highest quality finish, easy to install brackets and a complete application listing for today's (and yesterdays!) most popular trucks and SUV's: These are not your typical Tube Steps!

### The Outland™ Quality Advantage:

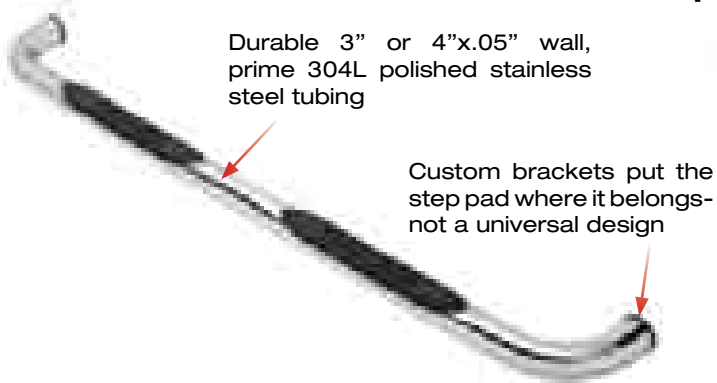
- Outland Stainless Tube Steps feature prime 304L, .05" wall stainless tubing polished to a mirror finish. The polishing process for an Outland step is longer and deeper pulling out the deepest shine from the steel. A true "deep polish"! Since Outland uses 304L stainless, these side steps will never rust, providing years of use and great Looks.
- Outland painted steel Tube Steps feature special E-coated, .07" wall steel that is "thick source" powder coat painted for a tough chip resistant finish. The special E-coat under coating provides double rust protection as it bonds to the metal creating a protective layer found no where else.
- All Outland Tube steps feature no drill installation (except 76-06 Jeep models) for ease of installation and a truly custom fit. All Tube Step Installation brackets are constructed of durable 3/8"-1/4" powder coat painted steel for long life and years of bounce free use.
- Each Tube Step feature special UV treated no-slip step pads with 5 mounting pins. These step pads are installed on a compressed portion of the tube - no exposed metal to rust.



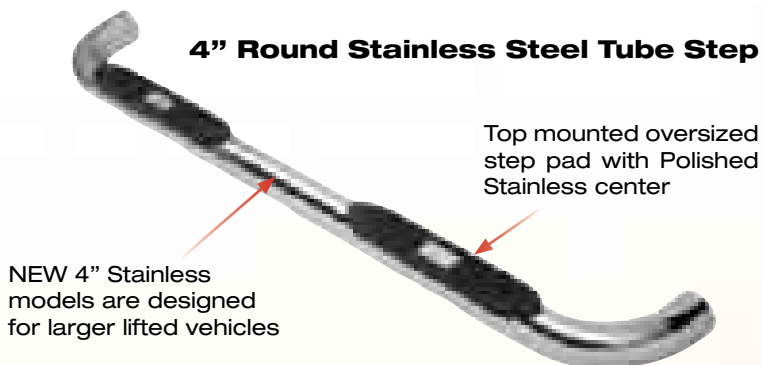
### 3" Round Black Tube Step



### 3" Round Stainless Steel Tube Step



### 4" Round Stainless Steel Tube Step



4" Round Stainless Tube Step Shown On 2007 GMC Sierra



3" Round Stainless Tube Step Shown On 2007 GMC Sierra

### 3" Stainless Steel/Painted Tubes Steps

Year/Model Chevy/GMC	Stainless	Black	Black Textured	Titanium
88-98 C/K Regular Cab (including Z71)	81593.02	81590.02	-	-
92-94 Blazer Full Size - 2-Door (exc ZR2)	81593.02	81590.02	-	-
92-99 Suburban	81593.01	81590.01	-	-
95-99 Tahoe/Yukon-2-Door	81593.02	81590.02	-	-
00-10 Tahoe/Yukon-4-Door (exc 04-07 Z71)	81593.03	81590.03	-	-
00-10 Suburban/Yukon XL Avalanche 1500	81593.04	81590.04	-	-
99-10 Silverado/Sierra Crew Cab Inc. HD	81593.05	81590.05	-	-
99-10 Silverado/Sierra Ext Cab Inc. HD	81593.06	81590.06	-	-
88-98 C/K Ext Cab	81593.07	81590.07	-	-
04-10 Colorado/Canyon Ext Cab	81593.08	81590.08	-	-
04-10 Colorado/Canyon Crew Cab	81593.09	81590.09	-	-
07-10 Silverado/Sierra Ext Cab	81593.10	81590.10	-	-
07-10 Silverado/Sierra Crew Cab	81593.11	81590.11	-	-
<b>Dodge</b>				
04-10 Durango	81593.12	81590.12	-	-
94-01 Ram-Quad Cab	81593.13	81590.13	-	-
02-08 Ram-Quad Cab	81593.14	81590.14	-	-
06-08 Ram Mega Cab	81593.15	81590.15	-	-
<b>Ford</b>				
99-10 Super Duty Super Cab	81593.16	81590.16	-	-
99-10 Super Duty Crew Cab	81593.17	81590.17	-	-
99-03 F150 Ext Cab	81593.18	81590.18	-	-
01-03 F150 Super Crew	81593.19	81590.19	-	-
04-08 F150 Super Cab	81593.20	81590.20	-	-
04-08 F150 Super Crew	81593.21	81590.21	-	-
98-06 Expedition	81593.22	81590.22	-	-
<b>Jeep</b>				
07-10 Wrangler (JK)-4-Door	81593.06	81590.06	11591.06	-
07-10 Wrangler (JK)-2-Door	81593.05	81590.05	11591.05	-
97-06 Wrangler	81593.04	81590.04	11591.04	11592.04
87-95 Wrangler	11593.03	11590.03	11591.03	11592.03
76-86 CJ 7	11591.02	11590.02	11592.02	-
76-83 CJ 5	-	11590.01	-	-
84-01 Cherokee 4-Door (Will fit 2-Door)	11590.81	-	-	-
99-04 Grand Cherokee	81593.32	-	-	-
05-10 Grand Cherokee	81593.33	-	-	-
<b>Nissan</b>				
04-10 Titan Ext Cab	81593.23	81590.23	-	-
04-10 Titan Crew Cab	81593.24	81590.24	-	-
<b>Toyota</b>				
00-06 Tundra Ext Cab	81593.25	81590.25	-	-
04-06 Tundra Double Cab	81593.26	81590.26	-	-
05-10 Tacoma Double Cab	81593.27	81590.27	-	-
05-10 Tacoma Ext Cab	81593.28	81590.28	-	-
07-10 Tundra Ext Cab	81593.29	81590.29	-	-
07-10 Tundra Crew Max	81593.30	81590.30	-	-
06-10 FJ Cruiser	81593.31	81590.31	-	-

Note: 76-06 Jeep CJ/Wrangler models require frame mounting. Drilling required.



### 4" Stainless Steel

Year/Model Chevy/GMC	Part #
99-06 Silverado Ext Cab 1500/2500/3500 Inc. HD	81520.01
99-06 Sierra Ext Cab 1500/2500/3500 Inc. HD	81520.01
01-06 Silverado Crew Cab	81520.02
01-06 Sierra Crew Cab	81520.02
07-10 Silverado Ext Cab 1500/2500/3500	81520.03
07-10 Sierra Ext Cab 1500/2500/3500	81520.03
07-10 Silverado Crew Cab	81520.04
07-08 Sierra Crew Cab	81520.04
06-08 Hummer H3	81520.25
<b>Dodge</b>	
06-08 Ram Mega Cab	81520.30
02-08 Ram Quad Cab 1500/2500/3500	81520.31
<b>Ford</b>	
04-08 F150 Super Cab XLT 4-Door	81520.50
04-08 F150 Super Crew	81520.51
99-10 Super Duty Super Cab	81520.52
99-10 Super Duty Crew Cab	81520.53
<b>Nissan</b>	
04-10 Tundra Double Cab	81520.80
<b>Toyota</b>	
07-10 Tundra Double Cab	81520.90
07-10 Tundra Crew Max	81520.91
<b>Jeep</b>	
07-10 Wrangler 4-Door	11593.08
07-10 Wrangler 2-Door	11593.07



**3" Round Black Tube Step  
Shown On Dodge Ram**



**4" Round Stainless Tube Step  
Shown On Dodge Ram**



**3" Round Stainless Tube Step  
Shown On Ford 150**



**4" Round Stainless Tube Step  
Shown On Ford 150**

## Truck/SUV Bull Bars

### The Outland™ Quality Advantage:

- Outland Stainless Bull Bars feature prime 304L, .05" wall stainless tubing polished to a mirror finish. The polishing process for an Outland Bull Bar is the same used on their high quality tube steps pulling the true shine out of the metal. By using only prime 304L stainless, these stainless Bull Bars will never rust, providing years of use and great looks.
- Outland painted steel 3" Bull Bars feature special E-coated, .07" wall steel that is "thick source" powder coat painted for a tough chip resistant finish. The special E-coat under coating provides double rust protection as it bonds to the metal creating a protective layer found no where else.
- All Outland Bull Bars have ground smooth welds that provide a "seamless" look on the vehicle giving you the best looking Bull Bar on the market! By grinding these welds smooth on the Black powder coat painted models, you virtually eliminate any rust points. Great looks, long life, that is what Outland is all about.
- Outland Bull Bars feature no hassle installation. Each Bull Bar is custom fit for the specific vehicle making sure the mount points are the strongest available. Tough 3/8"-1/4" powder coat painted mounting brackets and oversized hardware ensure that the Bull Bar provides years of vibration free use.
- Each Bull Bar includes a matching skid plate for added protection and dynamic good looks. Each skid plate is laser cut to ensure clean smooth lines and a no hassle installation.

Complete the look of your Truck or SUV with an Outland Bull Bar! The "overbuilt" grille guards provide front end protection from brush and small trees while giving your vehicle a true off road look. Only Outland gives you two Bull Bar size options: 4" for those oversized trucks and 3" designs in both polished stainless steel and durable black powder coat finishes. All Outland Bull Bars feature a one piece design with ground smooth welds and a durable skid plate for added protection. When you need the best, look to Outland!



**3" Stainless Bull Bar Shown on 2007 Sierra**



**4" Stainless Bull Bar Shown on 2007 Sierra**



**3" Black Bull Bar Shown on Dodge Ram**



**4" Stainless Bull Bar Shown on Dodge Ram**



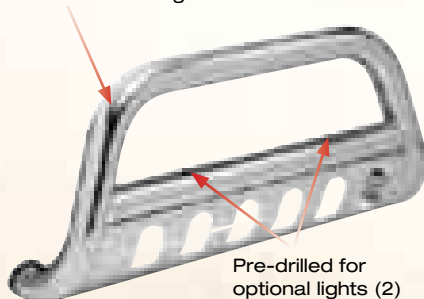
**3" Stainless Bull Bar Shown on Ford F150**



**4" Stainless Bull Bar Shown on Ford F150**

### 3" Stainless Bull Bar

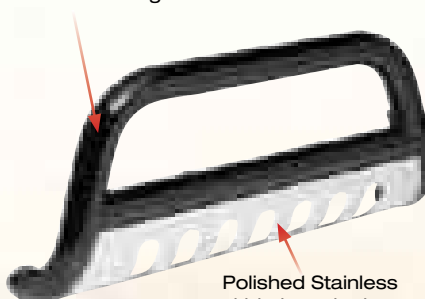
Durable 3" or 4"x.05" wall, prime 304L polished stainless steel tubing



Pre-drilled for optional lights (2)

### 3" Black Bull Bar

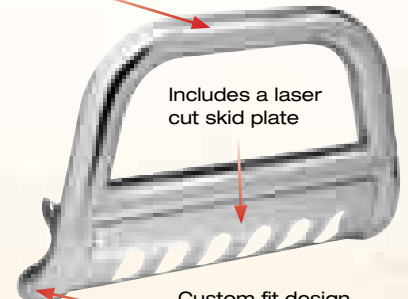
Powder coat painted models are available with 3"x.07" wall E-coated tubing



Polished Stainless skid plates look great, prevent rust

### 4" Stainless Bull Bar

NEW 4" Stainless Bull Bars are designed for larger, lifted vehicles



Includes a laser cut skid plate

Custom fit design provides a great look specific to your vehicle



**3" Stainless Bull Bar/Tube Steps  
Shown On 2007 GMC Sierra**



**3" Black Bull Bar/Tube Steps  
Shown On Dodge Ram**



**3" Stainless Bull Bar/Tube Steps  
Shown On Ford F150**



**4" Stainless Bull Bar/Tube Steps  
Shown On 2007 GMC Sierra**



**4" Stainless Bull Bar/Tube Steps  
Shown On Dodge Ram**



**4" Stainless Bull Bar/Tube Steps  
Shown On Ford F150**

**3" Bull Bars**

**Year/Model  
Black  
Chevy/GMC**

Year/Model	Stainless	Black
07-10 Avalanche 1500, Tahoe - 1/2 ton (1500), Suburban 1500, GMC Yukon/Yukon XL - 1/2 ton (1500), GMC Yukon/Yukon XL	82501.01	82001.01
01-06 Avalanche 1500 (with or without cladding), 00-06 Suburban - 1/2 ton (1500), 99-06 Silverado 1500LD, 00-06 Tahoe - 1/2 ton (1500), 99-06 GMC Sierra 1500, 00-06 GMC Yukon/Yukon XL - 1/2 ton (1500)	82501.02	82001.02
01-06 Avalanche 2500 (with or without cladding), 99-06 Silverado 2500LD, 01-06 Silverado1500HD/2500HD/3500HD, 00-06 Suburban - 3/4 ton (2500), 00-06 Tahoe - 3/4 ton (2500), 99-06 GMC Sierra 2500 LD, 01-06 GMC Sierra 1500HD/2500/3500HD, 00-06 GMC Yukon/Yukon XL - 3/4 ton (2500)	82501.03	82001.03
07-10 Avalanche 2500, Suburban/Tahoe/Yukon/Yukon XL 3/4 Ton (2500)	82501.04	82001.04
92-94 Full Size Blazer/Jimmy, 88-98 Chevy/GMC C/K Series 1500 PU, 88-98 Chevy/GMC C/K Series 2500/3500 PU, 92-99 Suburban/Tahoe/Yukon	82501.05	82001.05
04-08 Colorado, 04-09 GMC Canyon	82501.06	82001.06
07-10 Silverado/Sierra 1500LD	82501.07	82001.07
07-10 Silverado/Sierra 1500HD/2500/3500HD	82501.08	82001.08

**Dodge**

94-01 Ram 1500 (Excludes 99-01 Sport models), 94-02 Ram 2500/3500(Excludes 99-02 Sport models)	82501.09	82001.09
02-05 Ram 1500 (Excludes Daytona/Rumble Bee/SRT-10 models), 03-08 Ram 2500/3500, 06-07 Ram Mega Cab 1500/2500/3500	82501.10	82001.10
06-08 Ram 1500	82501.11	82001.11

**Ford**

00-06 Excursion, 99-04 F250/350/450/550 Super Duty	82501.12	82001.12
97-02 Expedition 4WD - (99-02 - 2WD), 97-04 F250LD, 4WD - (99-04 - 2WD), 99-04 F150/250LD 2WD, 01-03 F150 Super Crew, 04-07 Heritage	82501.13	82001.13
04-06 F150 Reg/Ext Cab & Super crew (Excludes Heritage Edition)	82501.14	82001.14
05-07 F250/350/450/550 HD Super Duty	82501.15	82001.15
08-09 F250/350/450/550 HD Super Duty	82501.16	82001.16

**Jeep**

07-10 Wrangler	82501.27	82001.27
06-09 Commander	82501.17	82001.17
05-07 Grand Cherokee	82501.25	
08-09 Grand Cherokee	82501.26	

**Nissan**

04-09 Titan King Cab/Crew Cab, Armada	82501.18	82001.18
05-07 Frontier PU, Pathfinder, X-Terra	82501.19	82001.19

**Toyota**

03-07 4-Runner	82501.20	82001.20
07-10 FJ Cruiser	82501.21	82001.21
99-06 Tundra, 01-07 Sequoia	82501.22	82001.22
05-09 Tacoma	82501.23	82001.23
07-10 Tundra	82501.24	82001.24

License Plate Bracket (NEW)

**4" Stainless Bull Bar/Tube Steps  
Shown On Dodge Ram**

Year/Model	Stainless	Black
02-06 Avalanche 1500	81501.01	81501.01
01-06 Silverado 1500 LD	81501.01	81501.01
00-06 Suburban 1500	81501.01	81501.01
00-06 Tahoe 1500	81501.01	81501.01
01-06 Sierra 1500 LD	81501.01	81501.01
00-06 Yukon/Yukon XL 1500 Exl. Denali	81501.01	81501.01
07-10 Silverado 1500HD	81501.02	81501.02
07-10 Silverado 2500LD	81501.02	81501.02
07-10 Silverado 2500HD	81501.02	81501.02
07-10 Silverado 3500HD	81501.02	81501.02
07-10 Sierra 1500/2500/3500HD	81501.02	81501.02
07-10 Sierra 2500LD	81501.02	81501.02
06-08 Hummer H3	81501.25	81501.25

**4" Stainless Bull Bar**

**Year/Model  
Chevy/GMC** Part #

02-06 Avalanche 1500	81501.01
01-06 Silverado 1500 LD	81501.01
00-06 Suburban 1500	81501.01
00-06 Tahoe 1500	81501.01
01-06 Sierra 1500 LD	81501.01
00-06 Yukon/Yukon XL 1500 Exl. Denali	81501.01
07-10 Silverado 1500HD	81501.02
07-10 Silverado 2500LD	81501.02
07-10 Silverado 2500HD	81501.02
07-10 Silverado 3500HD	81501.02
07-10 Sierra 1500/2500/3500HD	81501.02
07-10 Sierra 2500LD	81501.02
06-08 Hummer H3	81501.25

**Dodge**

02-08 Ram 2500/3500	81501.30
02-05 Ram 1500 (Exl. Daytona, Rumble Bee/SRT-10)	81501.30
06-08 Ram Mega Cab	81501.30

**Ford**

99-06 Super Duty 250/350	81501.50
04-09 F150	81501.51
07-10 Super Duty 250/350	81501.52



**81503.90**

## Contractors Console

- Keeps valuables out of sight while providing a comfortable arm rest and drink holder.
- Arm rest folds forward exposing an oversized 8.5"x11" writing area.
- Reinforced hinge and lid support hold writing surface steady while writing.
- Huge storage compartment is perfect for tools paperwork, cell phones, CD's and cassettes - Keeps your vehicle clean and organized.
- Oversized dual adjustable cup holders secure different size cups and bottles.
- Special bottom mount strap allows for center seat belt mounting.
- New removable organizer tray, keeps small items in their place.
- Dimensions - 18.5" Length x 10.5" Width x 8" Height



Contractors Console	Charcoal	Tan	Blue
Rugged Ridge Part #	33102.09	33102.04	33102.05



## Truck Bench Seat Console

- Large rear storage area has a built-in CD cassette holder.
- Front storage area holds cell phones, glasses, tissues, coins and other small items.
- Can be used for rear seat use to organize clutter and provide hand drink cup holders for passengers.
- Dense foam padded arm rest gives greater comfort and longer life.
- Dimensions - 16.5" Length x 8.5" Width x 9" Height

Contractors Console	Charcoal	Tan	Blue
Rugged Ridge Part #	33101.09	33101.04	33101.05



Use in the back seat of SUV's and cars to eliminate clutter



Large dual storage area holds CD's, cassettes, and cell phones



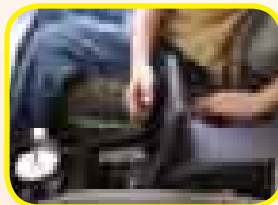
Bottom mount strap allows for center seat belt mounting

## Mini Van Console

Contractors Console	Charcoal	Tan	Blue
Rugged Ridge Part #	33101.09	33101.04	33101.05

- Removable soft sided CD holder keeps CD's clean and organized.
- Front storage compartment holds sunglasses, cell phones, coins, and other small items.
- Cavernous rear storage compartment hold s tissue, trash, drinks, and other larger items.
- Dual adjustable front & rear cup holders hold most cups and bottles.
- Constructed of heavy duty padded vinyl to match your interior and provide long life.
- Dense foam arm rest gives greater comfort and is better looking.
- Dimensions - 29" Length x 9" Width x 14" Height.

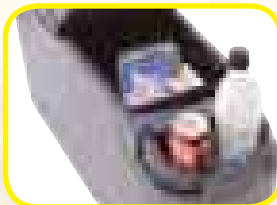
Large front storage area opens to a removable CD Holder



Keeps valuables out of sight and organizes your vehicle



Dual adjustable rear cup holder for back seat

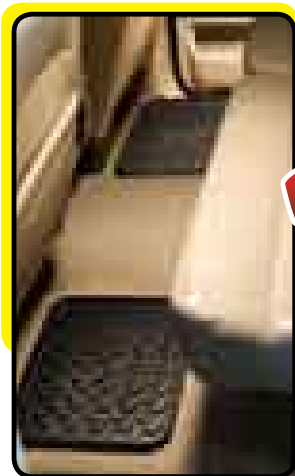


All Outland consoles feature dual adjustable cup holders that adjust to almost any cup size!

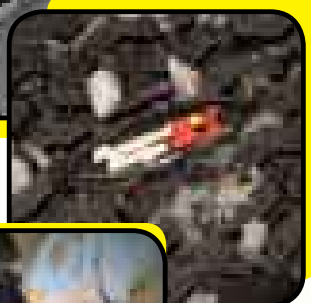
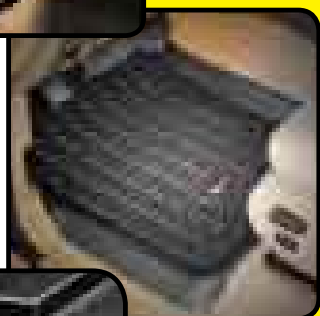


# All Terrain Floor Liners

This is not your typical floor liner! Ordinary floor liners in the market today are constructed of extruded plastic materials vacuum formed to fit the vehicle. Rugged Ridge has taken a completely different approach to floor protection. Each All Terrain Floor Liner is injection molded for superior fit and quality. The injection molded process, though more expensive to develop, allows us to create a floor liner that has exacting measurements for better fit and finish along with a deeply formed perimeter wall for maximum coverage. Each All Terrain Floor Liner has chevrons that are up to 3/8" deep. That is up to 3 times the depth of other floor liners! We call this true "Deep Tread Technology"!



**NEW!**



Year	Make/Model Chevy/GMC/Cadillac	Front	Rear	Kit
02-06	Avalanche (NEW)	82901.02	82950.01	82987.02
07-10	Avalanche (NEW)	82901.01	82950.01	82987.01
02-06	Escalade (NEW)	82901.02	82950.01	82987.02
07-10	Escalade (NEW)	82901.01	82950.01	82987.01
99-06	Silverado/Sierra 1500 Crew Cab (NEW)	82901.02	82950.01	82987.02
07-10	Silverado/Sierra 1500 Crew Cab (NEW)	82901.01	82950.01	82987.01
99-06	Silverado/Sierra 1500 Ext Cab (NEW)	82901.02	82950.01	82987.02
07-10	Silverado/Sierra 1500 Ext Cab (NEW)	82901.01	82950.01	82987.01
01-06	Silverado/Sierra 2500/3500 Crew Cab (NEW)	82901.02	82950.01	82987.02
07-10	Silverado/Sierra 2500/3500 Crew Cab (NEW)	82901.01	82950.01	82987.01
01-04	Silverado/Sierra 2500/3500 Ext Cab (NEW)	82901.02	82950.01	82987.02
00-06	Suburban (NEW)	82901.02	82950.01	82987.02
07-10	Suburban (NEW)	82901.01	82950.01	82987.01
00-06	Tahoe (NEW)	82901.02	82950.01	82987.02
07-10	Tahoe (NEW)	82901.01	82950.01	82987.01
00-06	Yukon (NEW)	82901.02	82950.01	82987.02
07-10	Yukon (NEW)	82901.01	82950.01	82987.01
<b>Ford/Lincoln</b>				
97-02	Expedition (NEW)	82902.05	82950.01	82987.25
97-03	F150 Ext Cab (NEW)	82902.04	82950.01	82987.24
04-08	F150 Ext Cab (NEW)	82902.01	82950.01	82987.21
09-10	F150 Ext Cab (NEW)	82902.03	82950.01	82987.23
97-03	F150 Reg Cab (NEW)	82902.04	82950.01	82987.24
04-08	F150 Reg Cab (NEW)	82902.01	82950.01	82987.21
09-10	F150 Reg Cab (NEW)	82902.03	82950.01	82987.23
01-03	F150 Super Crew (NEW)	82902.05	82950.01	82987.25
04-08	F150 Super Crew (NEW)	82902.01	82950.01	82987.21
09-10	F150 Super Crew (NEW)	82902.03	82950.01	82987.23
99-07	F250/F350 Super Duty (NEW)	82902.07	82950.01	82987.27
08-10	F250/F350 Super Duty (NEW)	82902.06	82950.01	82987.26
99-02	Lincoln Navigator (NEW)	82902.05	82950.01	82987.25
02-03	Lincoln Blackwood (NEW)	82902.05	82950.01	82987.25
06-08	Lincoln Mark LT (NEW)	82902.01	82950.01	82987.21
<b>Dodge</b>				
02-08	Ram 1500 Quad Cab (NEW)	82903.01	82950.01	82987.41
09-10	Ram 1500 Quad Cab (NEW)	82903.01	82950.01	82987.41
02-08	Ram 1500 Reg Cab (NEW)	82903.01	82950.01	82987.41
09-10	Ram 1500 Reg Cab (NEW)	82903.01	82950.01	82987.41
03-10	Ram 2500/3500 Quad Cab (NEW)	82903.01	82950.01	82987.41
06-10	Ram Mega Cab (NEW)	82903.01	82950.01	82987.41





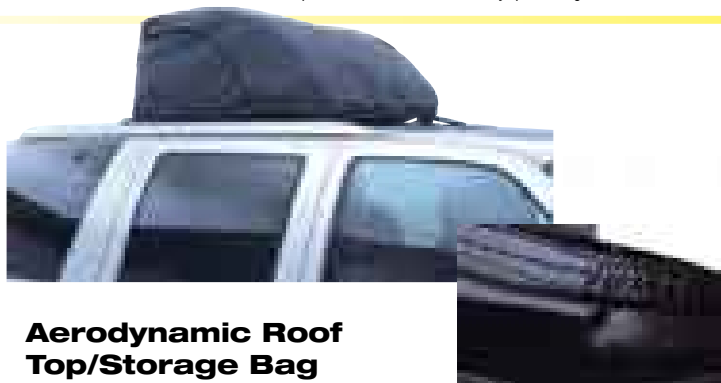
**WARNING:** Always secure your load with storage retention devices (not included). Never overload your receiver rack past the limits of 200lbs of evenly spaced cargo.



### Receiver Rack

- Carry those extra items with ease on the back of your vehicle.
- Mounts to any vehicle with a 2" receiver hitch
- Carries up to 200lbs of evenly distributed cargo.
- Powder coat painted for long life.
- 20"x60" platform.
- Receiver hitch pin not included.

Receiver Rack	Part #
All 2" Receiver Hitches	7700



### Aerodynamic Roof Top/Storage Bag

This storage system is designed for complete weatherproof protection of your cargo. The sloped front deflects water and air up and over the bag. Constructed of durable fiberglass reinforced waterproof tarpaulin material that ensures durability and weather resistance. With over 11 cubic feet of extra storage space this is a perfect alternative for expensive plastic pods. No-drilling required - attaches with heavy duty polypropylene straps to your existing roof rack.

Aerodynamic Roof Top Storage Bag	Part #
	12111.01



### Auto Backpack Roof Top Storage System

This system comes in two different models, depending on your cargo requirements. The outer material is a combination of soft neoprene material to protect your paint and durable nylon for long life. Each Auto Backpack features four tie down points to make installation easy and secure. Designed to provide quick alternative storage, these easy to use and store roof top storage bags are a must for those road trips. With 13 cubic feet of storage space, this is a perfect alternative to those expensive and hard to store plastic pods.

Roof Top Storage System	Part #
(39"x32"x18"), 13 CuFt.	12110.01
(54"x48"x20") 20 CuFt	12110.02



### Tailgate Nets

- Sport styling improves trucks appearance.
- Improves gas mileage by reducing tail gate drag.
- Great visibility for added safety.
- Constructed of durable die-cut polyester laminate, resists fading and stretching.
- Easy to install - some drilling required.

Contractors Console	Charcoal	Tan	Blue
Rugged Ridge Part #	33101.09	33101.04	33101.05



### Universal Chrome Truck Step

- Constructed of highly polished chromed steel.
- Contoured to complement today's truck exteriors.
- One size fits most trucks/SUV's.
- Non-skid tape supplied for added safety.
- Easy to install - some drilling required.
- Sold individually.

Universal Truck Step	Part #
Universal Truck Step Chrome	31501.01

# Manual Locking Hubs

**Knee deep in mud with a failed automatic hub and a disabled vehicle?** The only way to repair it is to replace it. The question is, with what? Factory automatic hubs have a history of failing when you need them most. A damaged hub will render your 4x4 useless and leave you stranded. Wish you could swap your venerable automatic hubs to a set of manual locking hubs? Rugged Ridge has heard your plea. Rugged Ridge Manual Locking Hubs are unanimously recognized as the world's toughest hubs by our thousands of satisfied customers worldwide. Brute strength matters, that is why the bodies of our hubs are crafted from impact resistant nodular iron, and feature a corrosion resistant die cast aluminum cap. Our hubs deliver better 4WD performance when locked and improved fuel economy in 2WD when unlocked, than automatic hubs. Purchasing a set of premium manual hubs is more cost effective than servicing your worn factory hubs. With the money you save you'll be able to carry a spare set, not that you'll need them. Sure you have to get out of the cab to lock the hubs, but unlike automatic hubs you won't have to wait until you lose traction for your four-wheel drive to engage.

## Rugged Ridge Premium Hubs Feature:

- A full metal cap and body crafted from impact resistant nodular iron.
- Corrosion resistant die cast aluminum caps coated with high luster epoxy enamel for along lasting finish.
- Better 4WD performance when the manual hubs are locked. Works in reverse and compression braking.
- No slippage or partial engagement / disengagement issues that plague automatic hubs.
- Better fuel economy by freewheeling in 2WD mode. Great for any "tow vehicle".
- Decreases wear on internal components by engaging 4WD only when needed.
- More durable and cost effective than replacing or servicing automatic hubs.
- Ridiculously simple installation. Your average installation is completed in less than 20 minutes.
- Manual hubs offer extra gear ranges. By unlocking your hubs and driving in 4WD mode, you gain use of 2WD Low and 2WD High ranges.
- 1998-00 Ford Ranger (15001.70) application is exclusively available from Rugged Ridge!



Make/ Model	Years	Part #	Spline Count	Bolt Count	Make/ Model	Years	Part #	Spline Count	Bolt Count
<b>Chevrolet / GMC</b>					<b>Jeep®</b>				
Blazer, Jimmy, Suburban	69-91**	15001.18 *	19	Internal Mt.	Willys CJ2A	46-49	15001.01	10	6
1/2 Ton Pickup Truck	69-87	15001.18 *	19	Internal Mt.	Willys CJ3A	48-53	15001.01	10	6
3/4 Ton Pickup Truck (NEW)	60-76	15001.17	19	6	Willys CJ3B	53-64	15001.01	10	6
3/4 Ton Pickup Truck	77-87	15001.18 *	19	Internal Mt.	Willys M38A1	52-68	15001.01	10	6
1 Ton Pickup Truck (NEW)	76-91**	15001.39	30	Internal Mt.	CJ5 & CJ6	55-71	15001.01	10	6
Geo Tracker (NEW)	89-98	15001.38	26	6	CJ5, CJ6, CJ7	72-80	15001.02	27	6
Grand Vitara (NEW)	99-04	15001.38	26	6	CJ7 & CJ8	81-86	15001.26	27	5
<b>Dodge / Chrysler</b>					<b>Jeepster Commando C101</b>				
1/2 Ton Pickup Truck (NEW)	47-68	15001.17	19	6	Jeepster Commando C104	66-71	15001.01	10	6
1/2 Ton Pickup Truck & Ramcharger	69-75	15001.18 *	19	Internal Mt.	Wagoneer & Gladiator	72-73	15001.02	27	6
3/4 Ton Pickup Truck (NEW)	57-75	15001.17	19	6	Wagoneer & Cherokee (SJ) (NEW)	63-73	15001.01	10	6
Power Wagon WC-50 & WC-60 (NEW)	42-56	15001.08	16	6	J-10 Pickup (NEW)	74-91	15001.18 *	19	Internal Mt.
1/2 Ton Pickup Truck & Ramcharger	80-93	15001.18 *	19	Internal Mt.	J-20 Pickup (NEW)	74-91	15001.18 *	19	Internal Mt.
3/4 Ton Pickup Truck & Ramcharger	80-93	15001.18 *	19	Internal Mt.	<b>Mazda</b>				
3/4 Ton Pickup Truck (NEW)	90-93	15001.39	30	Internal Mt.	B3000 & B4000	01-08	15001.70	27	Internal Mt.
1 Ton Pickup Truck w/Dana 60 (NEW)	90-93	15001.39	30	Internal Mt.	Navajo (NEW)	90-94	15001.65	27	5
Raider (NEW)	87-89	15001.43	28	6	Pickup Truck (NEW)	94-97	15001.65	27	5
<b>Ford</b>					<b>Mitsubishi</b>				
Bronco (Except Bronco II)	66-96	15001.18 *	19	Internal Mt.	Montero	82-92	15001.43	28	6
F100 1/2 Ton	59-86	15001.18 *	19	Internal Mt.	<b>Nissan</b>				
F150 1/2 Ton	59-96	15001.18 *	19	Internal Mt.	Patrol	80-87	15001.23	29	6
F250 3/4 Ton w/Dana 44	59-75	15001.18 *	19	Internal Mt.	Patrol	90-94	15001.45	31	6
F250 3/4 Ton w/Dana 44HD (NEW)	63-77	15001.17	19	6	Pickup Truck	86-93	15001.29	27	6
F250 3/4 Ton w/Dana 44	78-86	15001.18 *	19	Internal Mt.	Frontier V6	90-01	15001.61	28	6
F250 3/4 Ton w/Dana 60 (NEW)	78-97	15001.39	30	Internal Mt.	Pathfinder	86-89	15001.29	27	6
F350 1 Ton (NEW)	76-97	15001.39	30	Internal Mt.	Pathfinder V6	90-01	15001.61	28	6
F250 & F350 Super Duty (NEW)	99-04	15001.39	30	Internal Mt.	Xterra	00-04	15001.61	28	6
Ranger	98-00	15001.70	27	Internal Mt.	<b>Suzuki Sidekick/Geo Tracker</b>				
Ranger (NEW)	90-97	15001.65	27	Internal Mt.	Samurai & Sierra (NEW)	82-94	15001.38	26	6
Ranger (incl. 15001.65 , 15002.65) (NEW)	90-97	15003.65	27	Internal Mt. Kit	Sidekick & Vitara (NEW)	89-04	15001.38	26	6
Explorer (NEW)	90-94	15001.65	27	Internal Mt.	<b>Toyota</b>				
Ranger & Bronco II (NEW)	83-89	15001.67	23	5	Pickup Truck	76-85	15001.21	30	6
<b>International</b>					4 Runner	76-85	15001.21	30	6
Scout	60-71	15001.01	10	6	Pickup Truck, T100 (NEW)	86-00	15001.13	26	6
Scout II, Terra, Traveler	72-80	15001.02	27	6	4 Runner (NEW)	86-95	15001.13	26	6
1/2 Ton Pickup Truck (NEW)	56-67	15001.17	19	6	Tacoma*** (NEW)	95-00	15001.13	26	6
3/4 Ton Pickup Truck (NEW)	56-67	15001.17	19	6	<b>Dana 70</b>				
1/2 Ton Pickup Truck (NEW)	68-75	15001.18 *	19	Internal Mt.	Dana 70 Hub (NEW)	15001.97	35	Internal Mt.	
Travelall (NEW)	68-75	15001.18 *	19	Internal Mt.	<b>Other Components</b>				
<b>Isuzu</b>					Service Kit for 15001.65 Hub (NEW)	15002.65			
Trooper II (NEW)	87-99	15001.33	17	6	Service Kit for 15001.18 Hub (NEW)	15002.18			
Rodeo (NEW)	91-99	15001.33	17	6	*** (Replaces OE manual hubs)				
Amigo (NEW)	91-99	15001.33	17	6					

\* Some models converting from automatic hubs may require service kit for installation.

\*\* All Chevrolet pickup trucks built in 1988 were equipped with an automatic hub system which cannot be converted.

Part #'s 15001.39, .97, .13, .17, .67 & 15002.18 available 2010.